

Prepared For:

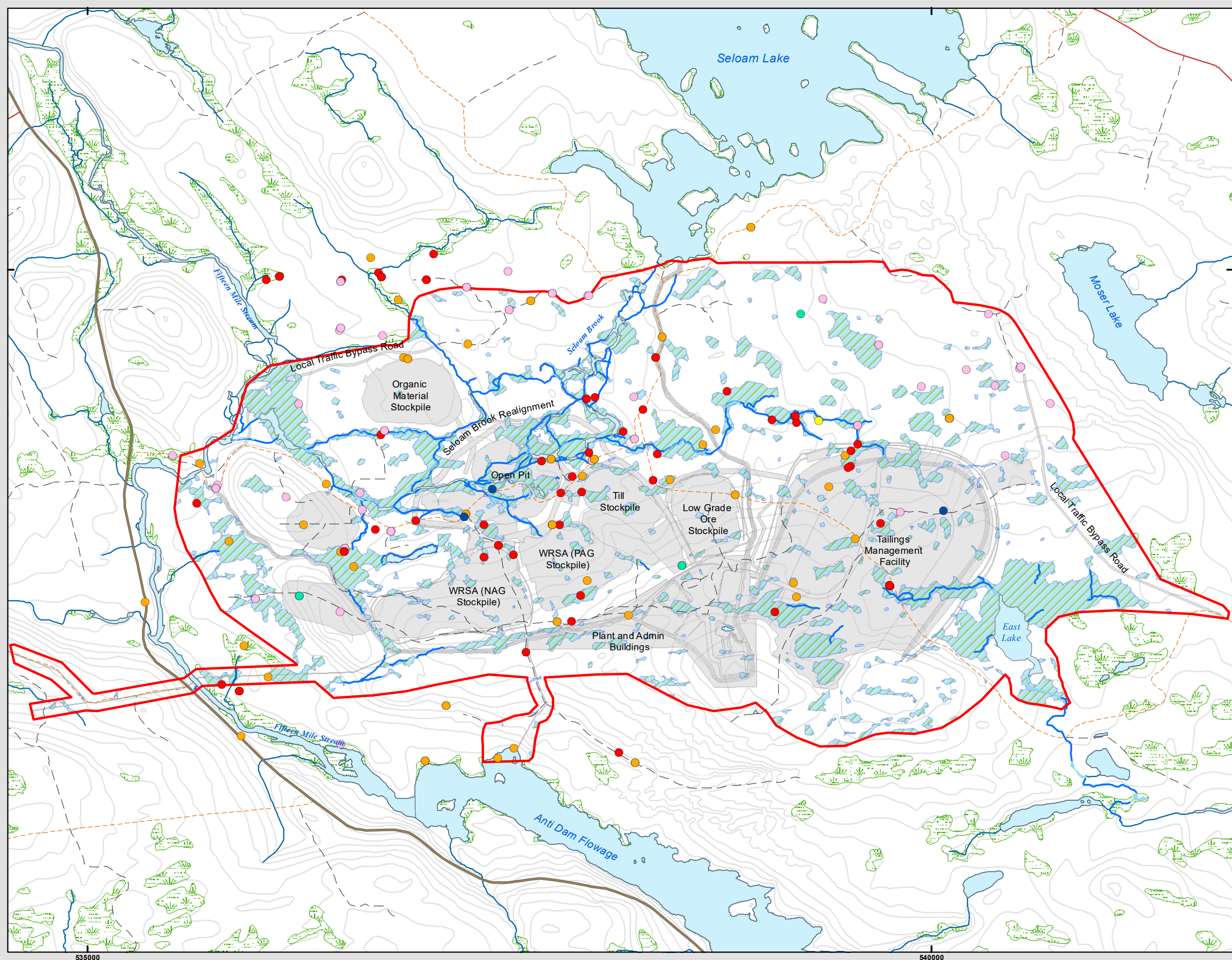


FIGURE 6.11-5

### FMS Study Area Priority Avifauna Species at Risk

Trafalgar, NS

- Priority Avifauna Species**
- Canada Warbler
  - Common Nighthawk
  - Eastern Wood-Pewee
  - Evening Grosbeak
  - Olive-sided Flycatcher
  - Rusty Blackbird
- Field Delineated Watercourses within FMS Study Area
- ▨ Field Delineated Wetlands within FMS Study Area
- ▨ NSE Wetlands outside FMS Study Area
- ▨ FMS Infrastructure Layout
- ▭ FMS Study Area



Coordinate System: NAD 1983 CSRS UTM Zone 20N  
 Projection: Transverse Mercator  
 Datum: North American 1983 CSRS  
 Units: Meter

0 250 500 1,000 m

1:21,000 Scale when printed @ 11" x 17"

Drawn By: AS Date: 2020-10-30

Service Layer Credits: Sources: Esri, HERE, Garmin, USGS, Intermap, INCREMENT P, NRCan, Esri Japan, METI, Esri China (Hong Kong), Esri Korea, Esri (Thailand), NGCC, (c) OpenStreetMap contributors, and the GIS User Community



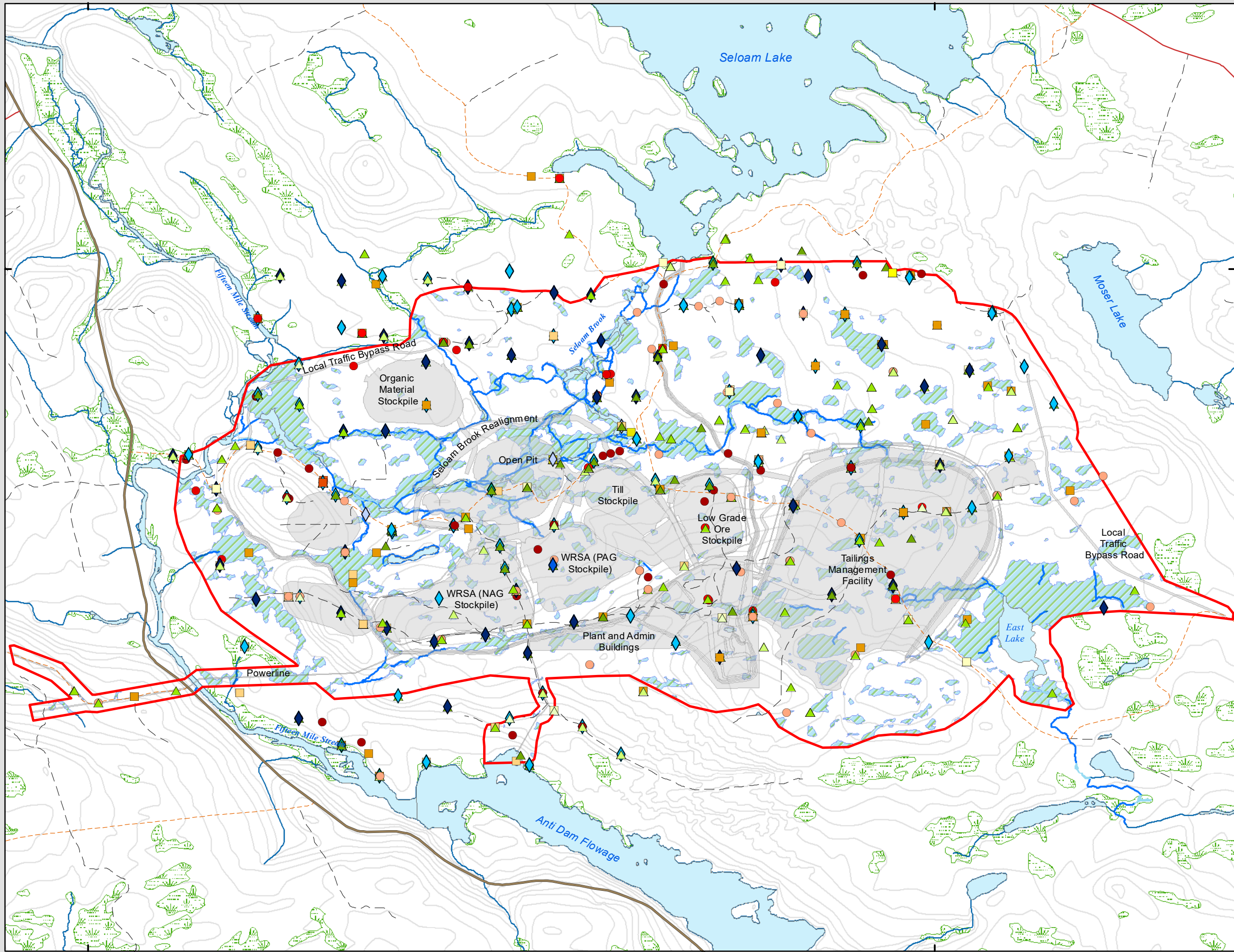
McCallum Environmental Ltd.



**FIGURE 6.11-6**

**FMS Study Area  
 Priority Avifauna  
 Species of Conservation  
 Interest**

**Trafalgar, NS**



- |   |                             |
|---|-----------------------------|
| ● American Kestrel                                    | ◆ Swanson's Thrush          |
| ● Bay-breasted Warbler                                | ◆ Tennessee Warbler         |
| ● Black-backed Woodpecker                             | ◆ Wilson's Snipe            |
| ● Blackpoll Warbler                                   | ◆ Yellow-bellied Flycatcher |
| ● Boreal Chickadee                                    | ◆                           |
| ● Cape May Warbler                                    | ◆                           |
| ● Gray Jay  | ◆                           |
| ● Greater Yellowlegs                                  | ◆                           |
| ● Northern Goshawk                                    | ◆                           |
| ● Pine Grosbeak                                       | ◆                           |
| ● Pine Siskin   | ◆                           |
| ● Purple Finch  | ◆                           |
| ● Red Crossbill                                       | ◆                           |
| ● Red-breasted Merganser                              | ◆                           |
| ● Red-breasted Nuthatch                               | ◆                           |
| ● Ruby-crowned Kinglet                                | ◆                           |
| ● Semipalmated Plover                                 | ◆                           |
| ● Spotted Sandpiper                                   | ◆                           |
| ◆ NSE Mapped Watercourses outside FMS Study Area      | ◆                           |
| ◆ Field Delineated Watercourses within FMS Study Area | ◆                           |
| ◆ Field Delineated Wetlands within FMS Study Area NSE | ◆                           |
| ◆ Wetlands outside FMS Study Area                     | ◆                           |
| ◆ FMS Infrastructure Layout                           | ◆                           |
| ◆ FMS Study Area                                      | ◆                           |



Coordinate System: NAD 1983 CSRS UTM Zone 20N  
 Projection: Transverse Mercator  
 Datum: North American 1983 CSRS  
 Units: Meter

0 250 500 1,000 m

1:21,000 Scale when printed @ 11" x 17"

Drawn By: AS Date: 2020-10-30

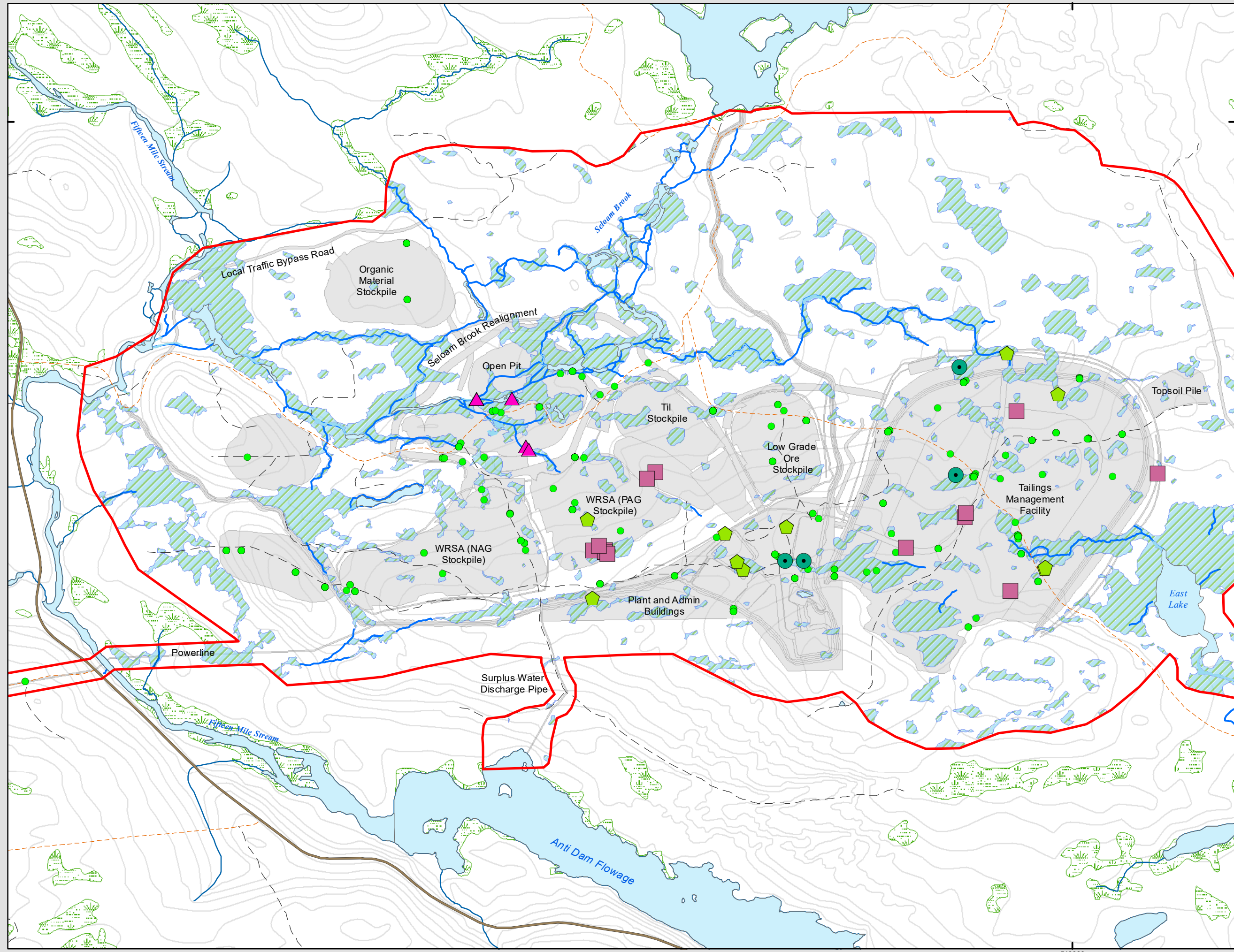
Service Layer Credits: Sources: Esri, HERE, Garmin, USGS, Intermap, INCREMENT P, NRCan, Esri Japan, METI, Esri China (Hong Kong), Esri Korea, Esri (Thailand), NGCC, (c) OpenStreetMap contributors, and the GIS User Community



**FIGURE 6.12-1**

**FMS Study Area  
 SAR/SOCI in Infrastructure  
 Impact Area**

**Trafalgar, NS**



**Priority Species**

- Avifauna
- ▲ Fish
- ⬠ Lichen
- Mammal
- Vascular Plant

— Field Delineated Watercourses within FMS Study Area  
 ▨ Field Delineated Wetlands within FMS Study Area  
 ▨ NSE Wetlands outside FMS Study Area  
 — FMS Infrastructure Layout  
 — FMS Study Area



Coordinate System: NAD 1983 CSRS UTM Zone 20N  
 Projection: Transverse Mercator  
 Datum: North American 1983 CSRS  
 Units: Meter

0 200 400 800 m

1:16,000 Scale when printed @ 11" x 17"

Drawn By: AS Date: 2020-10-30

Service Layer Credits: Sources: Esri, HERE, Garmin, USGS, Intermap, INCREMENT P, NRCan, Esri Japan, METI, Esri China (Hong Kong), Esri Korea, Esri (Thailand), NGCC, (c) OpenStreetMap contributors, and the GIS User Community






Prepared For:



FIGURE 6.13-1

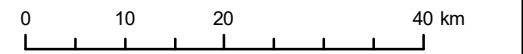
**Fifteen Mile Stream Spatial Boundaries:  
Mi'kmaq of Nova Scotia**

**Nova Scotia, Canada**

-  FMS Study Area
-  Mi'kmaq Local Assessment Area
-  Mi'kmaq Regional Assessment Area



Coordinate System: NAD 1983 CSRS UTM Zone 20N  
 Projection: Transverse Mercator  
 Datum: North American 1983 CSRS  
 Units: Meter

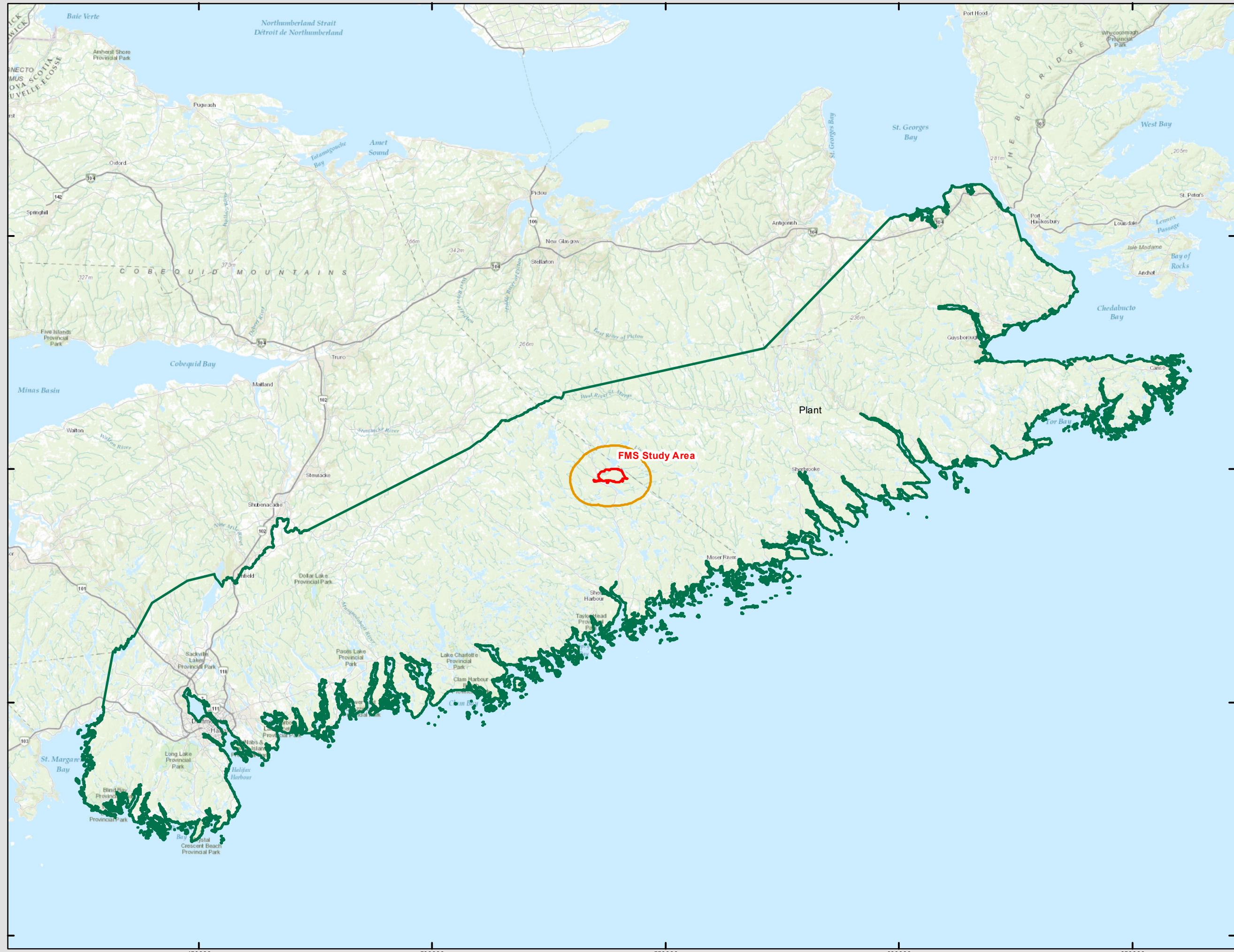


1:760,000  
 Scale when printed @ 11" x 17"  
 Drawn By: EP  
 Date: 2020-03-24

Service Layer Credits: Sources: Esri, HERE, Garmin, Intermap, increment P Corp., GEBCO, USGS, FAO, NPS, NRCAN, GeoBase, IGN, Kadaster NL, Ordnance Survey, Esri Japan, METI, Esri China (Hong Kong), swisstopo, © OpenStreetMap



McCallum Environmental Ltd.








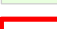

Prepared For:



FIGURE 6.13-4

Fifteen Mile Stream  
Crown vs. Private Land

Trafalgar, NS

-  Private Land
-  Nature Reserve
-  Wilderness Area
-  Crown Land
-  FMS Study Area



Coordinate System: NAD 1983 CSRS UTM Zone 20N  
Projection: Transverse Mercator  
Datum: North American 1983 CSRS  
Units: Meter



0 0.75 1.5 3 Kilometers

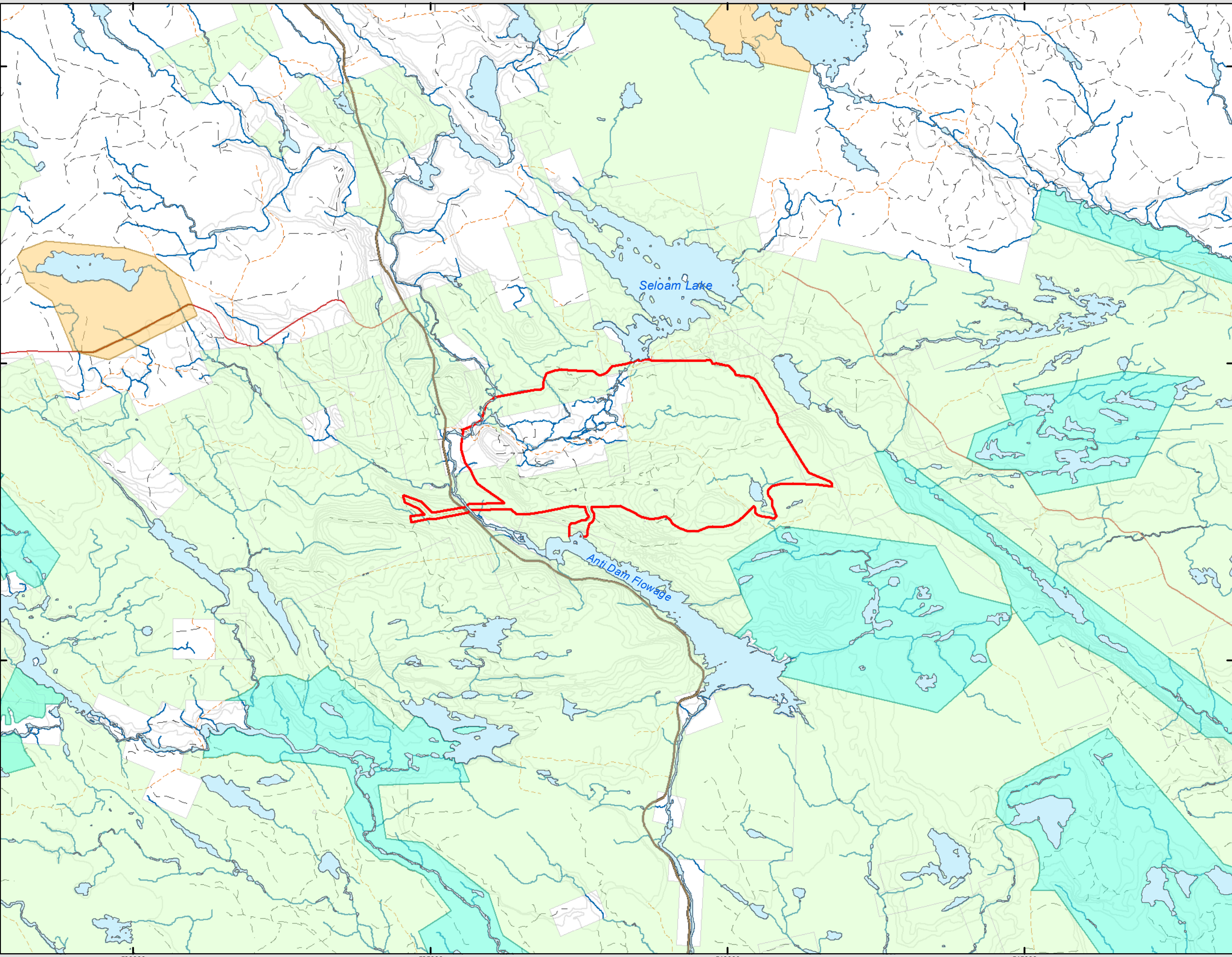
1:60,000 Scale when printed @ 11" x 17"

Drawn By: EP Date: 2020-03-24

Service Layer Credits: Sources: Esri, HERE, DeLorme, USGS, Intermap, INCREMENT P, NRCan, Esri Japan, METI, Esri China (Hong Kong), Esri Korea, Esri (Thailand), MapmyIndia, NGCC, © OpenStreetMap contributors, and the GIS User Community



McCallum Environmental Ltd.



53000 53500 54000 54500

500500 500000 499500



Prepared For:



FIGURE 6.14-1

FMS Study Area  
Archaeological Screening  
and Reconnaissance

Trafalgar, NS

- FMS Infrastructure Layout
- FMS Study Area



Coordinate System: NAD 1983 CSRS UTM Zone 20N  
 Projection: Transverse Mercator  
 Datum: North American 1983 CSRS  
 Units: Meter



0 187.5 375 750 m

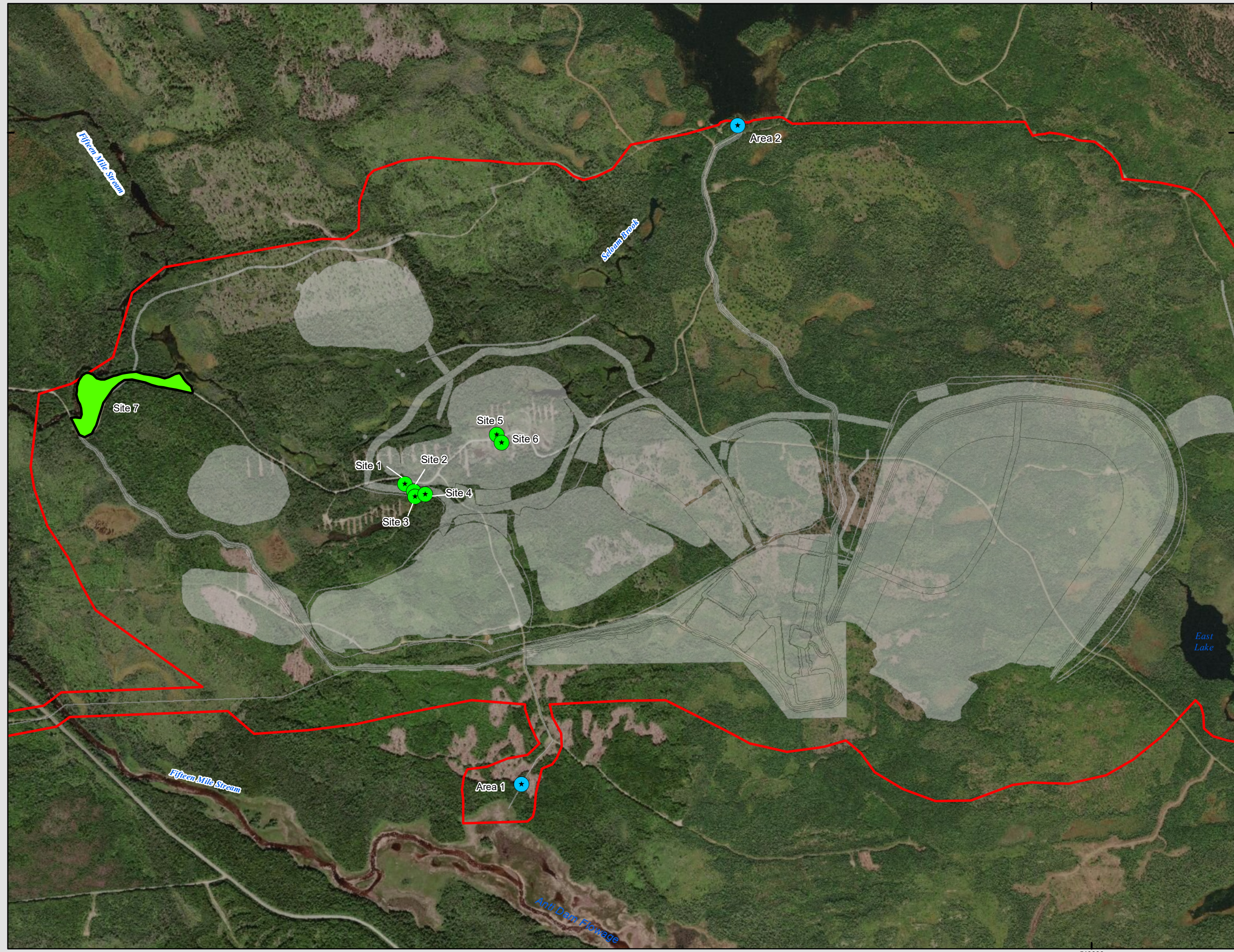
1:15,000 Scale when printed @ 11" x 17"

Drawn By: EP Date: 2020-08-28

Service Layer Credits: Source: Esri, Maxar, GeoEye, Earthstar Geographics, CNES/Airbus DS, USDA, USGS, AeroGRID, IGN, and the GIS User Community  
 Sources: Esri, HERE, Garmin, USGS, Intermap, INCREMENT P, NRCan, Esri Japan, METI, Esri China (Hong Kong), Esri Korea, Esri (Thailand), NGCC, (c)

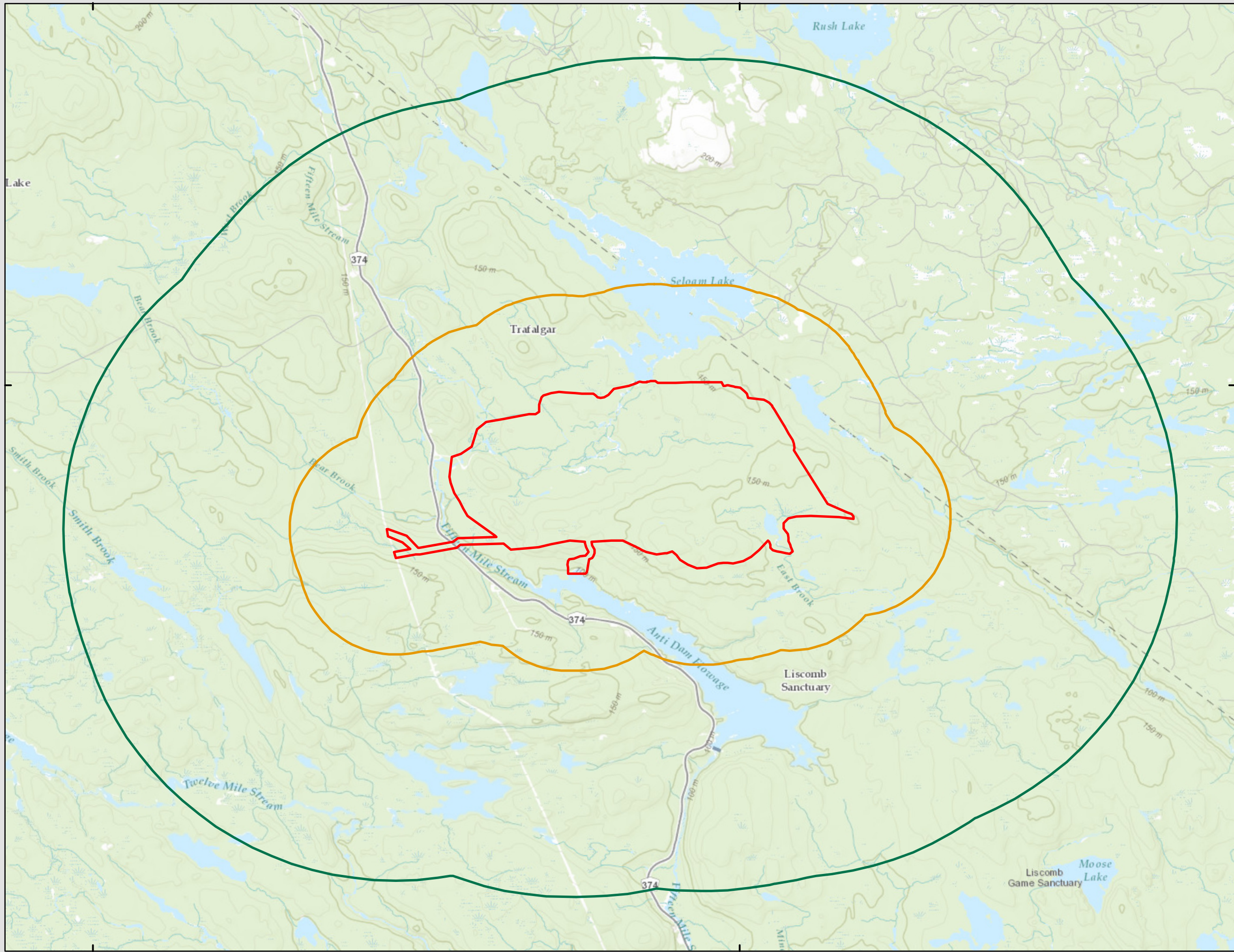


McCallum Environmental Ltd.



540000





Prepared For:



**FIGURE 6.14-2**

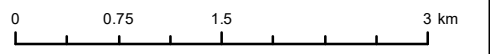
**FMS Study Area  
Spatial Boundaries:  
Cultural Heritage**

**Halifax County, NS**

- ▭ FMS Study Area
- ▭ Cultural Heritage Local Assessment Area
- ▭ Cultural Heritage Regional Assessment Area



Coordinate System: NAD 1983 CSRS UTM Zone 20N  
 Projection: Transverse Mercator  
 Datum: North American 1983 CSRS  
 Units: Meter



1:55,000  
 Drawn By: EP  
 Scale when printed @ 11" x 17"  
 Date: 2021-02-04

Service Layer Credits: Sources: Esri, HERE, Garmin, USGS, Intermap, INCREMENT P, NRCan, Esri Japan, METI, Esri China (Hong Kong), Esri Korea, Esri (Thailand), NGCC, (c) OpenStreetMap contributors, and the GIS User Community



**McCallum Environmental Ltd.**

530000

540000

500000






Prepared For:



FIGURE 6.15-1

**Fifteen Mile Stream  
Gold Project  
Spatial Boundaries:  
Socio-economic**

**Halifax County, NS**

-  Project Area
-  Socio-economic Local Assessment Area
-  Socio-economic Regional Assessment Area



Coordinate System: NAD 1983 CSRS UTM Zone 20N  
 Projection: Transverse Mercator  
 Datum: North American 1983 CSRS  
 Units: Meter



1:372,000

Scale when printed @ 11" x 17"  
Drawn By: EP Date: 2020-03-24

Service Layer Credits: Sources: Esri, HERE, Garmin, Intermap, increment P Corp., GEBCO, USGS, FAO, NPS, NRCAN, GeoBase, IGN, Kadaster NL, Ordnance Survey, Esri Japan, METI, Esri China (Hong Kong), swisstopo, © OpenStreetMap



McCallum Environmental Ltd.

